

IEEE JOURNAL OF SELECTED TOPICS IN APPLIED EARTH OBSERVATIONS AND REMOTE SENSING

A PUBLICATION OF THE IEEE GEOSCIENCE AND REMOTE SENSING SOCIETY



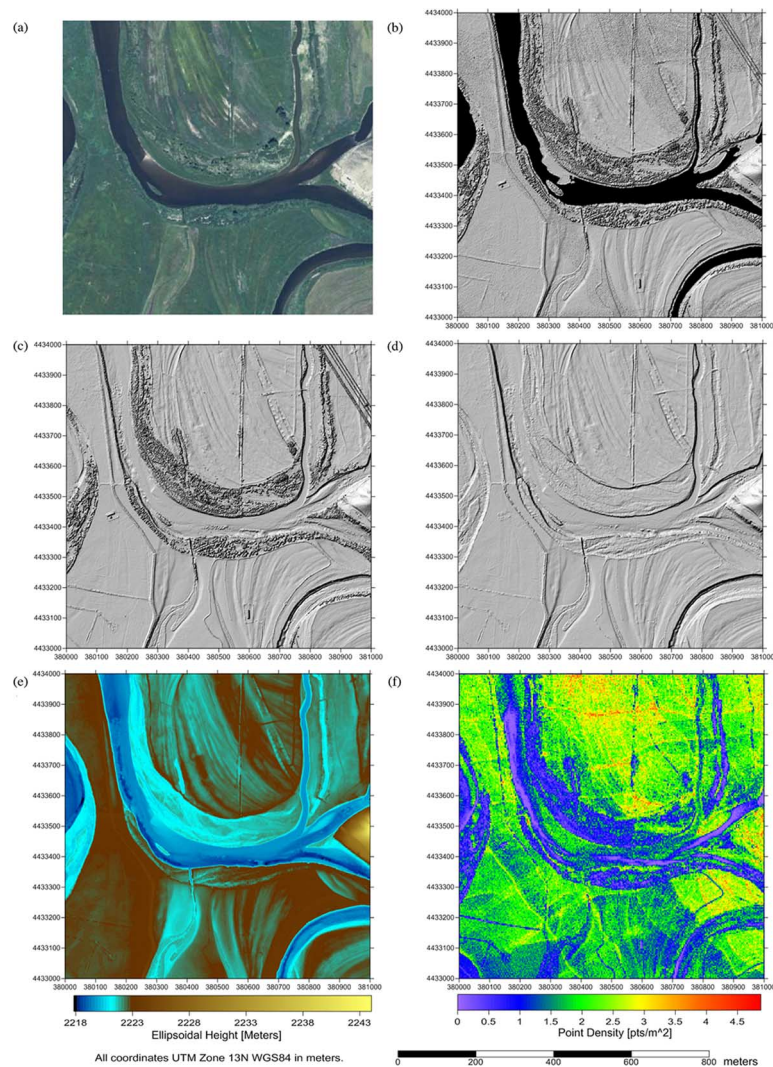
FEBRUARY 2014

VOLUME 7

NUMBER 2

IJSTHZ

(ISSN 1939-1404)



The confluence of the Blue and Colorado Rivers near Kremmling, CO. (a) RGB image showing the variety of land cover. (b) 1-m resolution shaded relief map of first return surface model obtained with a NIR LiDAR. (c) Shaded relief map from first returns obtained with the Aquarius. (d) Shaded relief map of DEM showing bare earth and bathymetry processed from Aquarius data. (e) Elevation image map of bare earth and bathymetry DEM. (f) Point density map of processed bare earth and bathymetry returns from Aquarius. See Fernandez Diaz *et al.*, pp. 623–635.